

THIS FINE MODEL IS BROUGHT TO YOU BY
H&H Classic Parts • HHClassic.com

CHEVROLET 1968 El Camino SS 396

Paper model created by Jesse Smith

www.papercruiser.com



OCT
2016



papercruiser.com

1:21 SCALE • 10" LONG

BODY

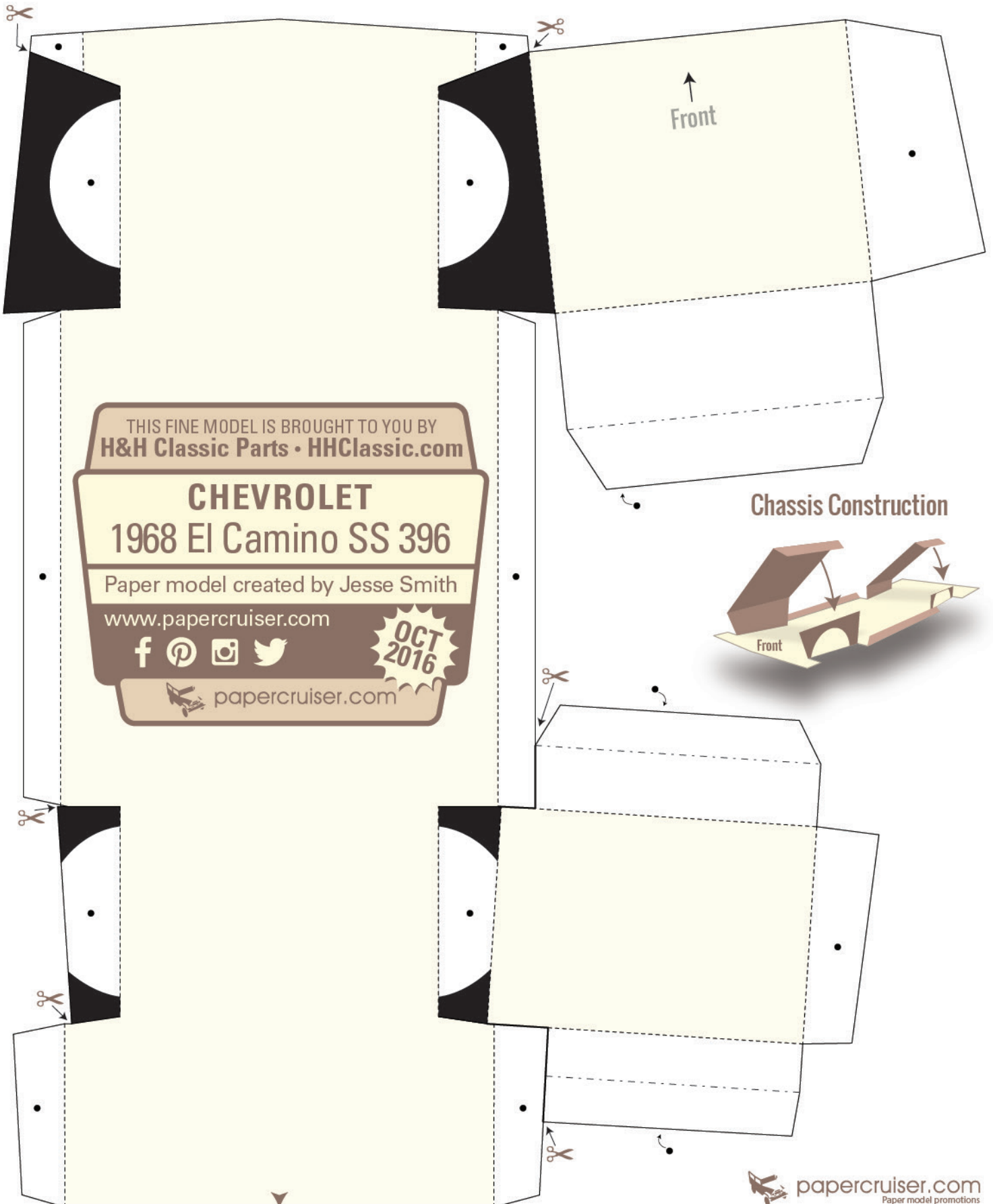
Peak fold line: -----

Valley fold line: -----

SUGGESTED INSTRUCTIONS:

1. Print on heavy paper (card stock)
2. IN GENERAL: Score (crease) and pre-fold all folds before gluing. Use common white glue, spread thinly, and pinch until it sticks. In many cases it will improve your build if you wait for the glue to dry before proceeding with an adjoining part.
3. Cut out all parts. It's helpful to use a hobby knife and cutting mat.
4. Attach the front windshield to the hood. Attach the grille to the hood. Attach front windshield to the body, and let dry. Then, attach them all to the body (on this page).
5. Build the cargo bed. Build and attach fenders to inside of cargo bed.
6. Attach rear windshield to body and let dry.
7. Attach cargo bed sidewalls to body and let dry.
8. Finish the rear tailgate area, let dry. The body's main components should now be completed.
9. Build chassis, attach to body and let dry.
10. Build front bumper and attach to body. Attach rear bumper and mirrors.
11. Build all four wheels, and darken the edges with a black marker. Attach to body. Note that one side of each wheel has white lettering. Each tire has a "top" and "bottom."
12. With a matching-color marker, color the fold and cut lines for an improved appearance.

CHASSIS



1968 El Camino SS 396

brought to you by

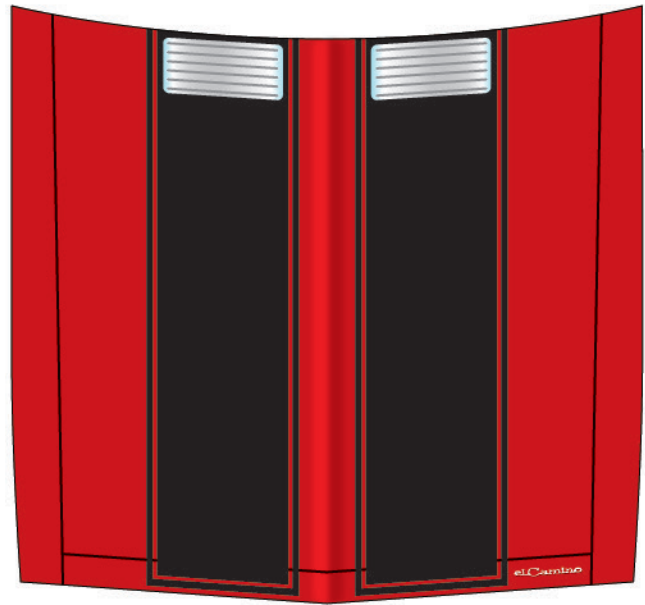
H&H Classic Parts

HHClassicParts.com

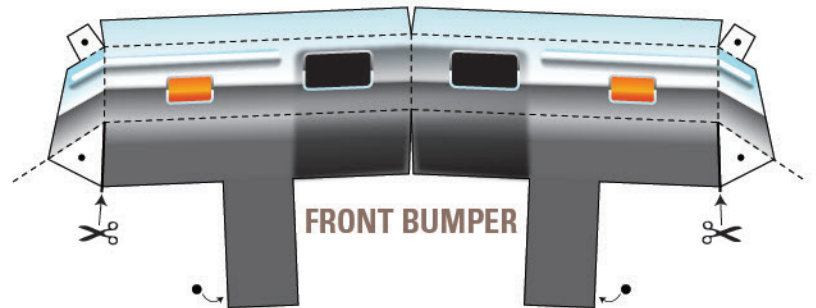
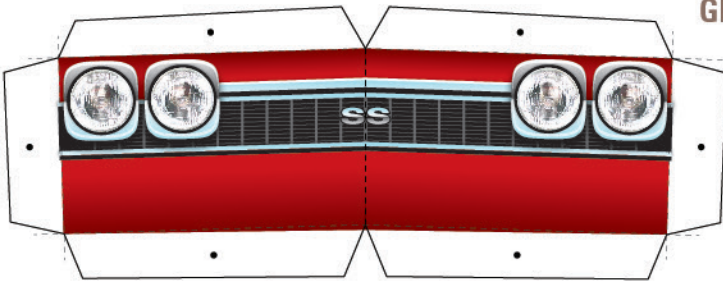
● = glue

● = glue on back

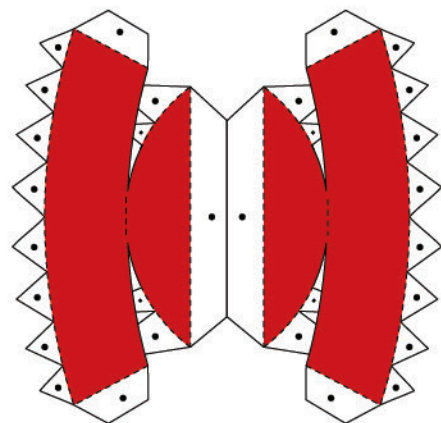
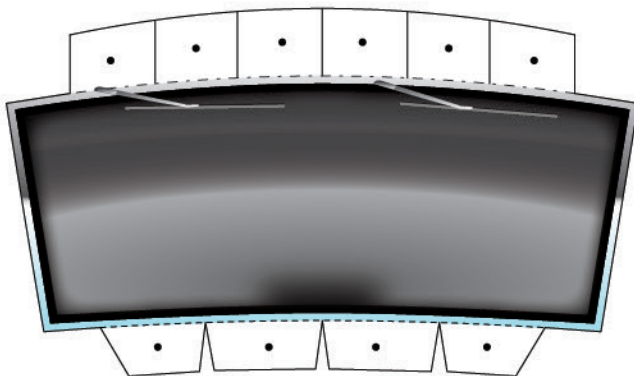
HOOD



GRILLE



WINDSHIELD



FENDERS

REAR BUMPER



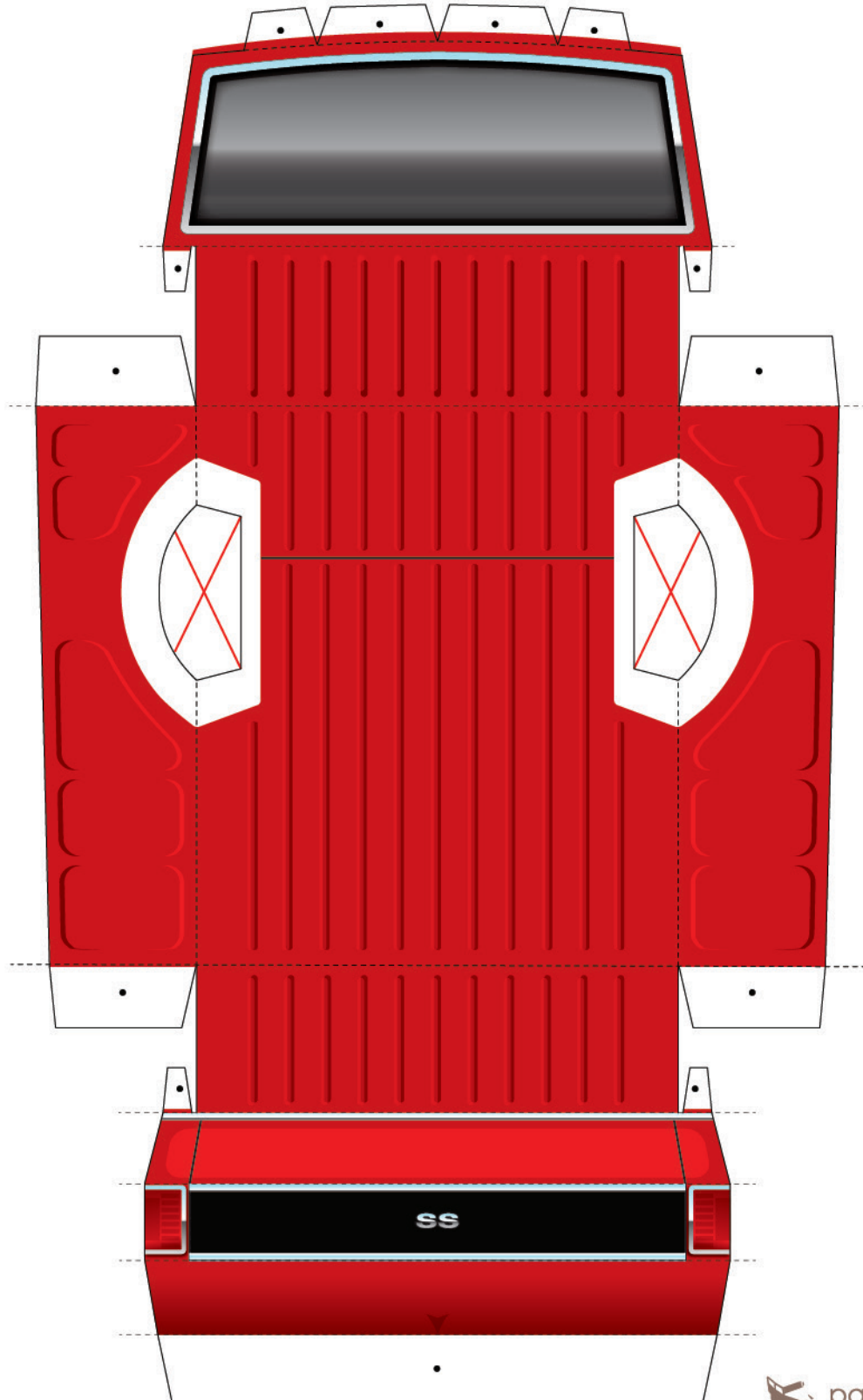
1968 El Camino SS 396

brought to you by

H&H Classic Parts

HHClassicParts.com

CARGO BED



papercruiser.com
Paper model promotions

1968 El Camino SS 396

brought to you by

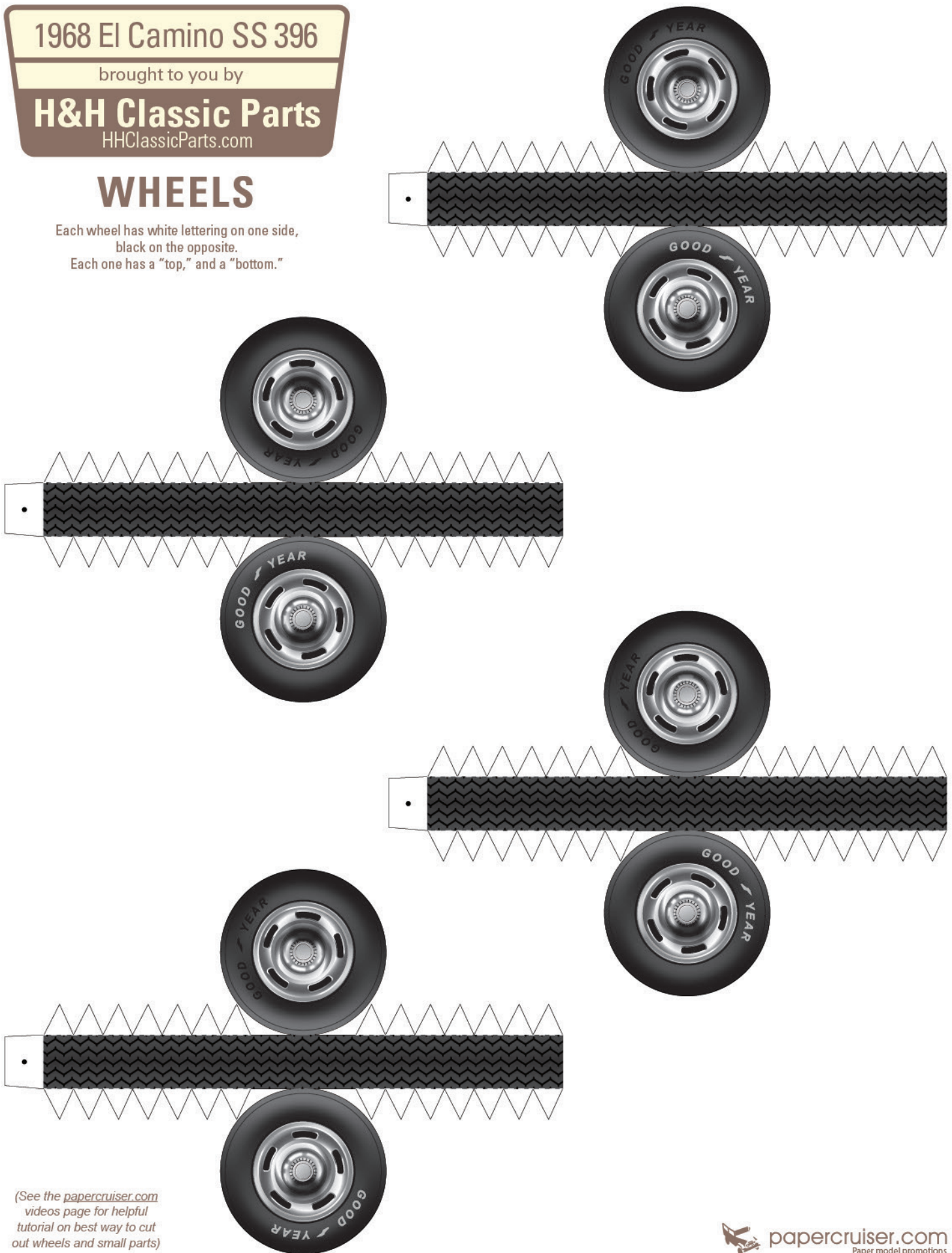
H&H Classic Parts

HHClassicParts.com

WHEELS

Each wheel has white lettering on one side,
black on the opposite.

Each one has a "top," and a "bottom."



(See the papercruiser.com
videos page for helpful
tutorial on best way to cut
out wheels and small parts)



papercruiser.com
Paper model promotions